

Welcome Day 12 April 2022



Bielefeld Graduate School in History and Sociology (BGHS)
Dr. Sabine Schäfer

3 leading principles

Interdisciplinarity: joint institution of Department of History and Faculty of Sociology

Internationality: doctoral researchers from all over the world

Self-initiative: Bottom-up processes and active participation of doctoral researchers

→ Multitude of perspectives

→ Multitude of experiences

BGHS community (April 2022)

185 doctoral researchers: 71 in history, 114 in sociology

53% female, 31% international

3% BGHS doctoral scholarship holders, 15% other scholarship holders, 54% academic staff, and 28% individually funded researchers

212 alumni since 2008

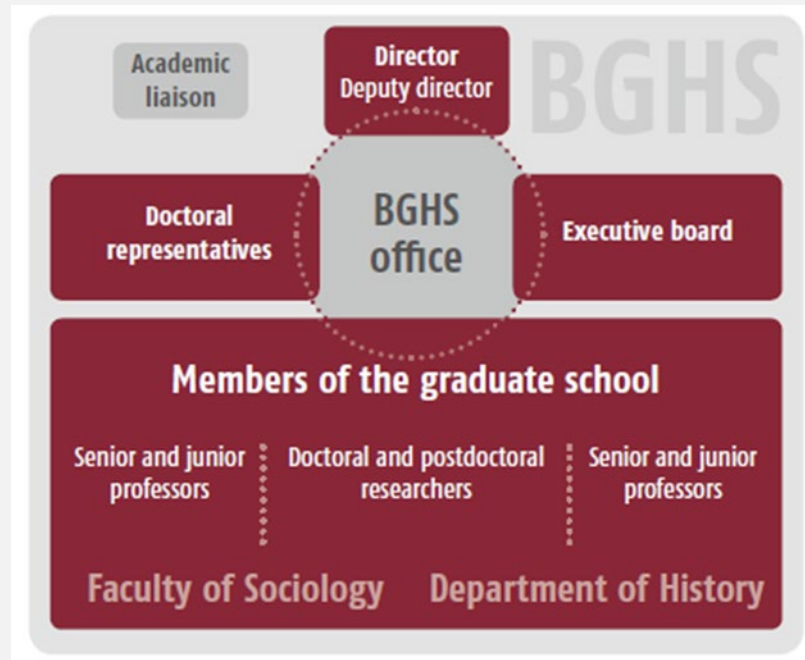
50 professors:
20 in Department of History,
30 in Faculty of Sociology

BGHS structure

Klaus Weinhauer (*director*)
Ruth Ayaß (*deputy director*)

Academic liaison
Hartmann Tyrell

Doctoral representatives
Sinmi Akin-Aina
Cornelis Holtkamp
Filip Vukusa
Abel Zekarias
Alice Farneti
Anastasiia Zaplatina



BGHS office
Clara Buitrago
Nicole Käufler
Ulf Ortmann
Sabine Schäfer

Executive board
Sinmi Akin-Aina
Ruth Ayaß
Antje Flüchter
Oliver Flügel-Martinsen
Frank Grüner
Britta Hochkirchen
Cornelis Holtkamp
Peter Kramper (dean)
Ursula Mense-Petermann
Christina Morina
Thomas Müller
Ulf Ortmann
Jost Reinecke
Andreas Vasilache (dean)
Klaus Weinhauer

Communication & information

Weekly newsletter as central source of information

BGHS blog on website

For study programme please see eKVV (electronic study programme)

For information about the BGHS please see <https://www.uni-bielefeld.de/einrichtungen/bghs/>

or contact us: bghs@uni-bielefeld.de

For information on the faculties please see:

Department of History
[www.uni-bielefeld.de/](http://www.uni-bielefeld.de/geschichte/)
[geschichte/](http://www.uni-bielefeld.de/geschichte/)

Contact:
Dr. Bettina Brandt
([bettina.brandt@uni-
bielefeld.de](mailto:bettina.brandt@uni-bielefeld.de))

Faculty of Sociology
[www.uni-bielefeld.de/](http://www.uni-bielefeld.de/(en)/soz/)
[\(en\)/soz/](http://www.uni-bielefeld.de/(en)/soz/)

Contact:
Yvonne Schoßmeier
([yvonne.schossmeier
@uni-bielefeld.de](mailto:yvonne.schossmeier@uni-bielefeld.de))

Doctoral training programme

Supervision Agreement of doctoral researchers, supervisors and BGHS

Support in conflict situations: academic liaison Prof. Dr. Hartmann Tyrell or Dr. Sabine Schäfer

Annual progress reports (first report after 6 months)

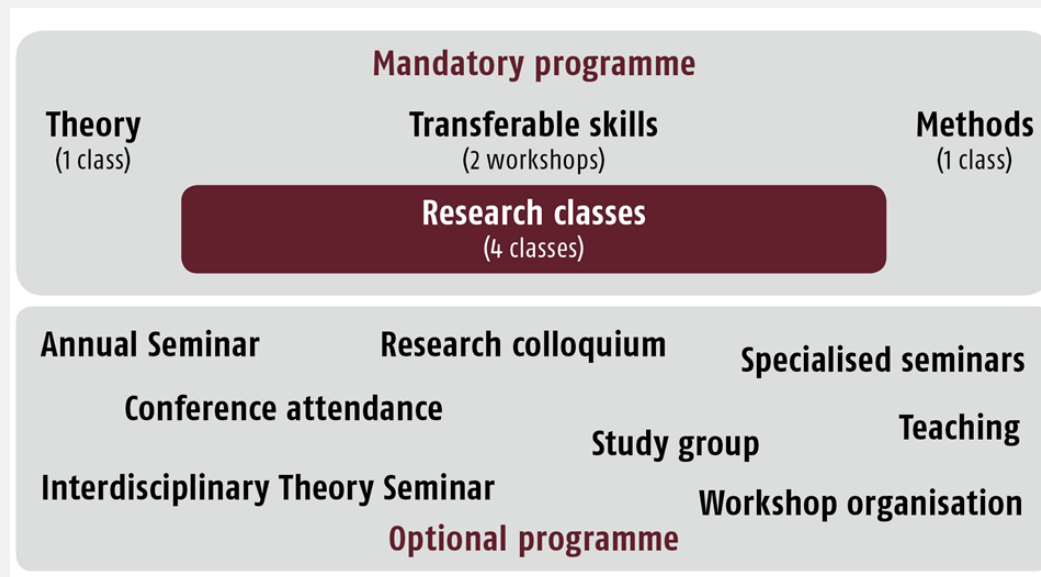
Confirmations of attendance

“Transcript of the Doctoral Programme” after completion of study programme

BGHS curriculum

Mandatory programme: 6 CP

one Theory Class
= 0.5 CP



two to four
Transferable Skills
Workshops = 1 CP
(BGHS, PEP or other)

one Methods Class
= 0.5 CP

four Research Classes
= 4 CPs

Conference paper: 0.5 CP
Organising a workshop: 1 CP
Participation in a study group: 0.5-1 CP
Post as a doctoral representative: 0.5 CP

Colloquium with own paper: 1 CP
Colloquium without own paper: 0.5 CP
Research Retreat: 0.5 CP
Teaching a course of one's own: 0.5-1 CP

Optional programme: 4 CP

Special BGHS features

Post as a doctoral researchers' representative

Research Retreat end of November 2022

Organisation of a workshop (funding available)

Public lecture series “Linie 4”

Working Paper Series

Doing-a-PhD-Coaching

Mentoring programme non-university careers

Advice on funding opportunities for international mobility and other things

Welcome to the BGHS!