

# Welcome Day 08 October 2024



Bielefeld Graduate School in History and Sociology (BGHS)  
Dr. Sabine Schäfer

# A few words about doing a PhD

- First phase of professional academic career leading to jobs inside and outside academia
- What it takes to succeed in academia:
  - Achievements
  - Support
  - The claim to a 'place of one's own'
- BGHS: 3 leading principles: interdisciplinarity, internationality, self-initiative
- BGHS: The more you take part, the more you get out of it.

# BGHS community (October 2024)

191 doctoral researchers: 57 in history, 134 in sociology

58% female, 36% international

14% scholarship holders, 57% academic staff, and

29% individually funded researchers

264 alumni since 2008

50 professors: 20 in Department of History

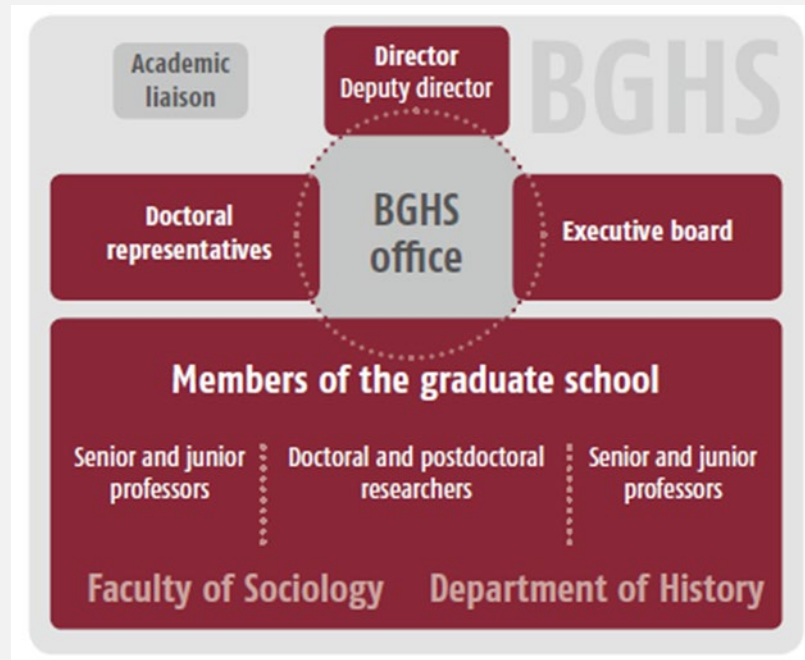
30 in Faculty of Sociology

# BGHS structure

Ruth Ayaß (*director*)  
Frank Grüner (*deputy director*)

*Academic liaison*  
Hartmann Tyrell

*Doctoral representatives*  
Mariza Mathis  
Frederic Kunkel  
Angela Gutierrez  
Elisabeth Schmidt  
N.N.  
Ioannis Stavroulias



*BGHS office*  
Clara Buitrago  
Nicole Käufler  
Sabine Schäfer

*Executive board*  
Ruth Ayaß  
Clara Buitrago  
Lars Deile (dean)  
Oliver Flügel-Martinsen (dean)  
Frank Grüner  
Martina Kessel  
Martin Kroh  
Frederic Kunkel  
Teresa Malice  
Mariza Mathis  
Ursula Mense-Petermann  
Christina Morina  
Lisa Regazzoni  
Tobias Werron

# Communication & information

Weekly newsletter as central source of information

BGHS blog on website

For study programme please see eKVV (electronic study programme)

For information about the BGHS please see <https://www.uni-bielefeld.de/einrichtungen/bghs/>

or contact us: [bghs@uni-bielefeld.de](mailto:bghs@uni-bielefeld.de)

For information on the faculties please see:

**Department of History**  
<https://www.uni-bielefeld.de/fakultaeten/geschichtswissenschaft/index.xml>

**Contact:**  
**Dr. Bettina Brandt**  
([bettina.brandt@uni-bielefeld.de](mailto:bettina.brandt@uni-bielefeld.de))

**Faculty of Sociology**  
<https://www.uni-bielefeld.de/fakultaeten/soziologie/>

**Contact:**  
**Astrid Dinter**  
([promotionsausschuss.soz@uni-bielefeld.de](mailto:promotionsausschuss.soz@uni-bielefeld.de))

# Doctoral training programme

Supervision Agreement of doctoral researchers, supervisors and BGHS

Support in conflict situations: academic liaison Prof. Dr. Hartmann Tyrell or Dr. Sabine Schäfer

Annual progress reports (first report after 6 months)

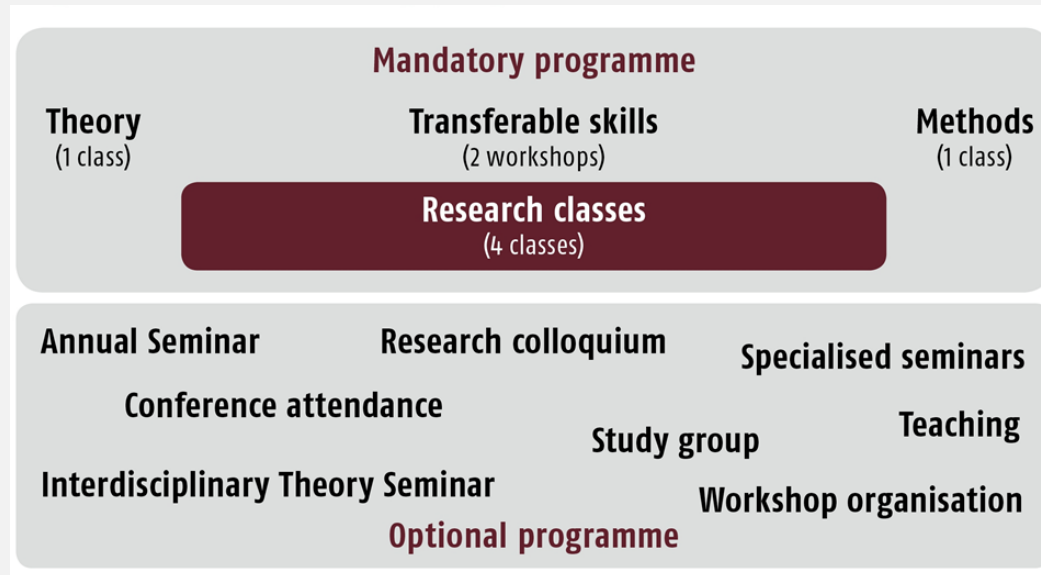
Confirmations of attendance

“Transcript of the Doctoral Programme” after completion of study programme

# BGHS curriculum

**Mandatory programme: 6 CP**

one Theory Class  
= 0.5 CP



two to four  
Transferable Skills  
Workshops = 1 CP  
(BGHS, PEP or other)

one Methods Class  
= 0.5 CP

four Research Classes  
= 4 CPs

*Conference paper: 0.5 CP*  
*Organising a workshop: 1 CP*  
*Participation in a study group: 0.5-1 CP*  
*Post as a doctoral representative: 0.5 CP*

*Colloquium with own paper: 1 CP*  
*Colloquium without own paper: 0.5 CP*  
*Research Retreat: 0.5 CP*  
*Teaching a course of one's own: 0.5-1 CP*

**Optional programme: 4 CP**

# Special BGHS features

Post as a doctoral researchers' representative

Research Retreat on 6/7 December at VHS Bielefeld

Organisation of a workshop (funding available)

Public lecture series “Linie 4”

Working Paper Series

Advice on funding opportunities for international mobility and other things



# Welcome to the BGHS!